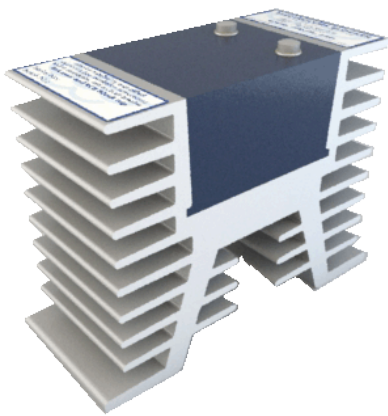


Electrolysis Blocker



Marine Protection Systems



Features:

- ✓ ISO, AS/NZS & ABYC standards certified approved
- ✓ 67A continuous current rating
- ✓ 5000A fail safe rating * (see over)
- ✓ Compact for easy installation and inspection
- ✓ Waterproof-solid state components - no service required
- ✓ Proven high performance heat sink and ignition proof design

Description:

Product Code MPSEB67

The MPS Electrolysis Blocker™ is a proven galvanic isolator with unique performance and features tested to the highest international marine standards. This unit is designed to block corrosion causing current that travels between vessels at a marina using a common shore power connection. The failsafe construction offers peace of mind and confidence with no ongoing maintenance or monitoring required. The MPS Blocker is compact and easy to install which makes retro fitting your vessel easy and affordable.



Vessels in a marina are interconnected via the common shore earth which carries low voltage DC current between them and the marina.

The result is more rapid consumption of anodes and the vessels unprotected submerged metal parts.

An Electrolysis Blocker™:

- ✓ Blocks the damaging DC current
- ✓ Maintains effective AC earth capability

please visit us at: www.marineprotectionsystems.com.au



Standards compliance and testing certificates:

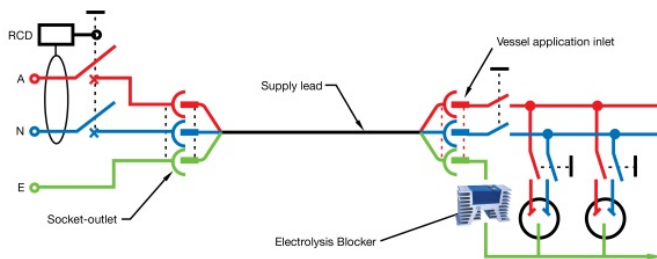
- ✓ AS/NZS3004.2.2008 & 3820:2009
- ✓ ABYC A-28
- ✓ Marine ISO 8846

Installation Instructions:

The MPS Electrolysis Blocker must be installed by a licenced Electrician.

* The Electrolysis Blocker must be used in conjunction with a circuit breaker rated up to 16A max (minimum 5KA fault rated) and a 30mA residual current device.

The diagram below shows the general arrangements for electrical supply to a vessel with blocker installed. Further information can be obtained in Appendix B of AS/NZS3004.2



The Electrolysis Blocker shall be connected into the supply protective earthing conductor before it connects to the boats earth system. It should be installed where there is protection from accidental access, good ventilation, as close as practical to the shore power inlet / distribution panel and behind the appliance inlet. Use the mounting slots on the Blocker to secure it. The Electrolysis Blocker is installed in series in to the earthing conductor, the Blocker is clearly labelled "Ship Earth" and "Shore Earth". The terminals of the Blocker should be treated as live parts.

The information stickers provided must be affixed in plain view on the front of the distribution panel.

Maintenance Instructions:

The MPS Electrolysis Blocker does not require service or maintenance as it contains no moving or serviceable parts.

Boat owners are required to obtain an Electrical Warrant Of Fitness (EWOFF) for all vessels with hard wired 240VAC electrical systems.

MPS recommend inspection periodically by a licenced electrician to ensure earth terminal connections remain secure and the unit stays properly mounted.

Electrolysis Blockers can be tested for performance and/or fault conditions by a qualified electrician using a multimeter.

The MPS Electrolysis Blocker is designed and sold for the purpose of galvanic corrosion protection and must not be used for any other use.

The MPS Electrolysis Blocker must be registered with MPS to validate warranty.

Return completed warranty registration cards to the mailing address below.

Contact Information:

Marine Protection Systems Pty Ltd
15a Hector Street, Osborne Park WA 6017

[p] +61 8 9204 3476
[f] +61 8 9242 7314
[e] sales@marineprotectionsystems.com.au